

Channels

Radio Caroline offers two distinct channels, receivable via our two websites (addresses on back page) or smartphone apps. Our main channel may also be heard on 648 kHz AM and some DAB radios in certain areas of the UK. See our main website for DAB coverage.



Our main channel plays music from all of the decades in which the station has broadcast.



Caroline Flashback, plays music from the 60s and the 70s when the station broadcast from the high seas.

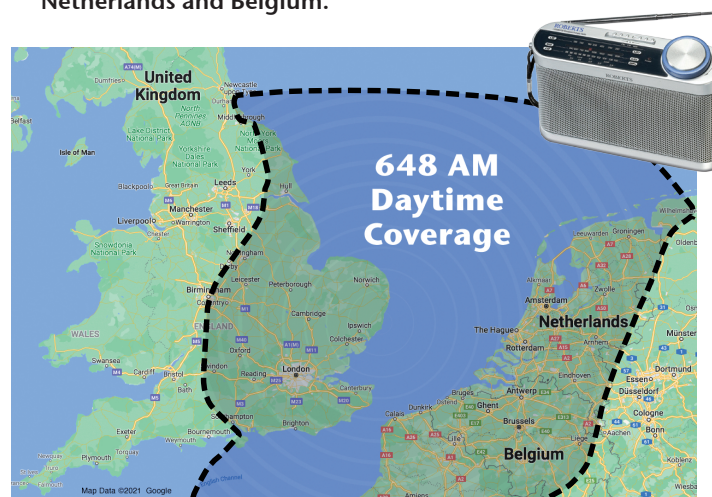


Radio Caroline is a not-for-profit organisation whose main running costs come from Support Group subscriptions and donations. You can join the Support Group or make a donation via our main website.

How to receive us

On 648kHz AM

- Across the South East of England and parts of The Netherlands and Belgium.



Listen Online with:

- Radio Player from the “Listen” button on our website.
- The Caroline app on any iPhone, iPod Touch, iPad or Android device – just £1.99 from Apple’s App Store or from Google’s Play Store.
- ‘Wi-fi’ Radio or Smart Speaker.



See the Streams Guide pages of our websites for more information on how to listen on-line
www.radiocaroline.co.uk
www.carolineflashback.co.uk

radio Caroline



The world’s most famous
offshore radio station
on 648kHz AM, online
and on your mobile



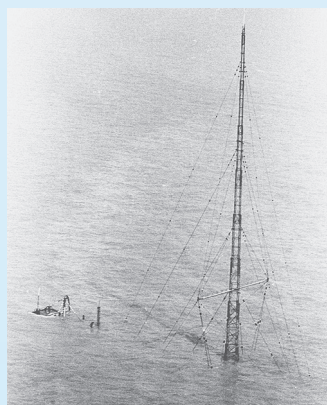
Radio Caroline's Remarkable Story

In the 60s the 'Baby Boomers' were now teens with money to spend, rejecting post-war austerity for their own lifestyles, fashion and music. But the BBC was still locked into the Big Band era. New music trends were mostly ignored.

A young Ronan O'Rahilly showed that, while UK law prohibited private radio broadcasts, this could be circumvented by placing complete radio stations on ships beyond UK jurisdiction. Thus Radio Caroline was born in 1964, playing new pop music round the clock and with two ships in different locations, Caroline covered the whole country and parts of Europe. The station soon had more listeners than all of the BBC channels combined, while London and Liverpool became the pop capitals of the world. Hundreds of new British bands and artists appeared, youth culture, fashion and music exploded. By 1967 and the 'Summer Of Love', everyone was happy - aside from politicians. Caroline had by then been joined by other pirate stations.

Punished by the Government

When the Labour government felt secure from voter reaction, they created a new law that with a wide variety of penalties would make pirate radio unprofitable. By autumn all the other stations had closed, Caroline continued, but after eight months the money was all gone and the ships were towed away for debt. Many still think that this was the end of the story - but no. By 1972 one ship had been recovered and Caroline returned and for eight more years battled against the elements, legislation, an ageing ship and financial problems. The listeners just enjoyed the music while admiring the station for its determination and per-



sistence. In March 1980 the old *Mi Amigo* sank. The crew escaped with their lives, but only barely. Again, this disaster led many to feel that Radio Caroline was finally finished, but giving up was not an option and in time a larger and more robust ship, *Ross Revenge*, was obtained and prepared.

Back Again, Bigger and Better

By 1983 Caroline returned yet again. Some thought that by now the station had become an established part of British history and for a while this appeared to be so. In 1987 *Ross Revenge*, having no other option, stayed at sea during the '87 hurricane, but lost her showpiece 300ft transmitting mast. By late 1989 the amnesty, which the station now felt it enjoyed, was shown to be an illusion. The ship was raided by the authorities when equipment was smashed and removed. These actions were probably illegal, but effective and started the decline that would later end the station's time at sea. But for a time Caroline re-started broadcasts, causing the now Conservative Government to create some sinister new legislation, closing every loophole in the previous law and introducing extreme penalties.

Shipwrecked – Again

While looking for ways around this legislation the station fell silent and, under a virtual blockade, living conditions on board became intolerable. In late 1991, and in awful



weather, *Ross Revenge* was shipwrecked on the notorious Goodwin Sands. Loss of life was again barely avoided and the ship was thought to be surely lost, but was re-floated and brought inshore – albeit in ruined

condition. A small team decided to see what, if anything, could be rescued, both in a marine and broadcasting sense, using their own efforts and money and aided by donations. A long, slow and difficult path of recovery thus commenced.

Radio Caroline Today

Three decades on *Ross Revenge* is at anchor on the River Blackwater in Essex, fully functioning as a broadcast base and often used for that purpose. Trips and guided tours of the ship are offered and a charity has now been created 'MV ROSS REVENGE (Home of Radio Caroline)' – to raise the considerable sums needed to put the ship back in to good structural order.

Radio Caroline broadcasts globally on multiple internet streams at radiocaroline.co.uk – Programmes are also available via apps, tablets and smart speakers.

More recently and to acknowledge the stations past, Caroline now broadcasts on 648 AM (Medium Wave) covering a substantial part of England and parts of Europe, just as it did back in 1964.